



*Tactics Beyond Limits*



# *Empowering* All Project Leaders

for *Success*

## Project Leaders face diverse challenges

Project leaders face diverse challenges. They need to assess situations, make quick decisions, optimize resources, and motivate teams.



Rapid Market  
Changes



High-Level  
Accountability



Key Stakeholders  
Demands



High Pressure to  
Deliver Results



Entrepreneurs



Executives



PJT Managers



Consultants



Product  
Managers





## *Who We Are*


We are a global, boutique professional firm headquartered in Japan.

We provide project consulting and leadership coaching, collaborating with international partners.

We work alongside leaders to achieve global goals, applying our problem-solving expertise and leveraging our cultural insights into Japan.




# International Team with strong presence in Japan




**Carey**  
*Client success through talent dev*

- Corporate account management
- Client relations
- HR Operations and data management




**Betty**  
*Client Manager & Executive Coach*

- Talent development
- Client relations
- Business Development




**Airi**  
*Project Coordinator*

- Content Creation
- Sales & Marketing




**Kelly**  
*Key Talent Dev & Executive Coach*

- Teaching ESL (in Japan)
- Master's in Engineering (Intel Corp.)
- Customer Service




**Maciej**  
*Business & Sales Development*

- Business development strategy
- Pricing strategy
- Revenue management




**Becky**  
*Key Talent Dev & Executive Coach*

- Global communication in engineering
- Program management (Spark Gym)




**Jeff**  
*Business Dev & Executive Coach*

- Power pitch
- Executive coaching
- Business development




**Soshi**  
*Branding & Creative Solution*

- Digital design
- Coding and Web development
- Project Strategy & Branding



**Anna**  
*Creative Editor & Executive Coach*

- Global communication in art and culture
- Talent development



**Nik**  
*Key Talent Dev & Executive Coach*

- Talent development
- Higher education
- Teaching methodology

## 1. Teams of Unique Talents Across Borders

While headquartered in Japan, we have established a trusted global talent network. We create strategies that help businesses integrate seamlessly into local markets for global impact.

**Countries of Our Key Partners:** [NA] United States, Canada, [EMEA] Germany, Denmark, Sweden, Spain, Ireland, Israel, South Africa, [APAC] India, Bangladesh, China, South Korea, Taiwan, Vietnam, Philippines, Malaysia, Singapore, Indonesia, Mongolia, and more.

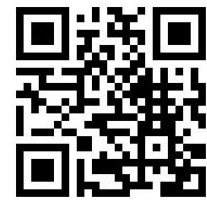
## 2. Selected by Top-Tier Clients

As a small fish in a big pond, we have earned a reputation as a trustworthy and reliable service provider. We believe in building true long-term relationships with strategic partnerships as our core approach.

**Our Clients Include:** Global consulting firms, global accounting firms, online banks, entertainment companies, pharmaceutical companies, automotive manufacturers, home appliance companies, IoT startups, venture capital firms, simultaneous interpretation companies, JETRO, and local governments.

*Your Needs, Our Solutions!*

# What we offer :



**Reach out today! We're here to help.**  
support@onedrops.com



## A partner to enter the Japanese market?

→ **PJT Strategic Liaison Office:**  
We provide advisory services and strategic communication support to bridge cultural and language gaps.



## Strategic Resources for Your Projects?

→ **Project Task Force:**  
Our experts deliver project strategy and resources to help you achieve your project goals effectively.



## HR Solution for ESL Leadership Development?

→ **Global Leadership Coaching:**  
We offer practical leadership skills and communication training for non-native English-speaking professionals.

## Collaborate with us

### Service Collaboration to Expand in Japan?

→ **Service Collaboration Partners:**  
We partner with global leaders to deliver comprehensive, synergized services for business growth in Japan.

### Career Opportunities?

→ **Onedrops Air Company:**  
Join our trusted global network to tackle mission-based projects together.



# Credentials :

We support leaders across industries who align with our philosophy, providing tailored guidance to overcome their challenges.

## *J-Startup Support Program:*

Official partner of J-Startup since 2018, supporting startups nationwide in Japan.

\*A program led by METI.

- Planning of the startup support programs
- Hosting talk sessions and workshops
- Mentoring for entrepreneurs
- English pitch training



# Credentials :

We support leaders across industries who align with our philosophy, providing tailored guidance to overcome their challenges.

## *Global Leadership Development for Top Tier Professional Firms:*

Developed a leadership evaluation framework for overseas projects, driving strategic HR and training.

- Identifying key challenges and needs
- Designing effective frameworks and solutions
- Assessment & Feedback
- Engaging stakeholders
- Ensuring ongoing support and training



## *Japan-EU Team for Business & Product Localization:*

Utilized our European network to enhance product expansion through user insights.

- Developed strategic hypotheses for market entry
- Local Market Intelligence
- Gathered local market insights to guide decision-making
- Conducted comprehensive competitor and market research



# Credentials :

We support leaders across industries who align with our philosophy, providing tailored guidance to overcome their challenges.

## ***DX Project PMO Support***

Led a large-scale digital transformation project, guiding decision-makers and managing development.



## ***HR-BP Project PMO Support***

Implemented feedback systems to boost team engagement and organized key communication events.

## ***EU-Japan Alliance Support***

Facilitated negotiations and communications to ensure smooth collaboration between Japanese and European stakeholders.



## ***English Coaching for Executives***

Provided specialized coaching for ESL executives to strengthen leadership in English.



Founder & CEO, Onedrops, Inc.

# Leo Murashige

---

An advisor, management consultant, and entrepreneur with a unique background. Trained at the National Defense Academy and the Ground Self-Defense Force Officer Candidate School.

As the first Japanese participant in a Danish leadership program, he resolved long-standing management issues in the Japanese market. In Singapore, he elevated key supply chain metrics across 14 Asia-Pacific countries to world-class levels.

At Accenture and GREE, he led domestic and international projects, including project recovery and global launches. In 2014, he founded Onedrops Inc., using his global experience to provide consulting and coaching services. He also advises and lectures for various companies.

In 2012, he completed the Sahara Marathon, one of the toughest races in the world. He enjoys tea ceremonies and martial arts.





# Team / Members :

We assemble flexible global teams tailored to each mission, free from geographical and physical constraints.



**Leo**

*Leadership & Crisis management*

- Situation analysis & Issue identification
- Leadership in crisis mode
- Tactical solutions development



**Carey**

*Client success through talent dev*

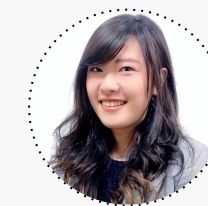
- Corporate account management
- Client relations
- HR Operations and data management



**Soshi**

*Branding & Creative Solution*

- Digital design
- Coding and Web development
- Project Strategy & Branding



**Airi**

*Project Coordinator*

- Content Creation
- Sales & Marketing



**Betty**

*Client Manager & Executive Coach*

- Talent development
- Client relations
- Business Development



**Nik**

*Key Talent Dev & Executive Coach*

- Talent development
- Higher education
- Teaching methodology



**Kelly**

*Key Talent Dev & Executive Coach*

- Teaching ESL (in Japan)
- Master's in Engineering (Intel Corp.)
- Customer Service



**Maciej**

*Business & Sales Development*

- Business development strategy
- Pricing strategy
- Revenue management



**Joe**

*Product Design & Executive Coach*

- Product Strategy
- UI / UX Design
- Community Building



**Becky**

*Key Talent Dev & Executive Coach*

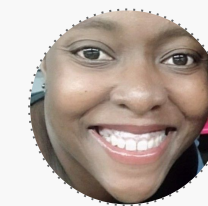
- Global communication in engineering
- Program management (Spark Gym)



**Jeff**

*Business Dev & Executive Coach*

- Power pitch
- Executive coaching
- Business development



**Sandra**

*Key Talent Dev & Executive Coach*

- Executive coaching
- Education and teaching



**Anna**

*Creative Editor & Executive Coach*

- Global communication in art and culture
- Talent development



**Hana**

*Legal & Accounting*

- Tax and legal
- Payroll



**Watson**

*Executive Concierge*

- Customer relations
- Administration
- Operations



**Takashi**

*Executive Concierge*

- Customer relations
- Administration
- Operations

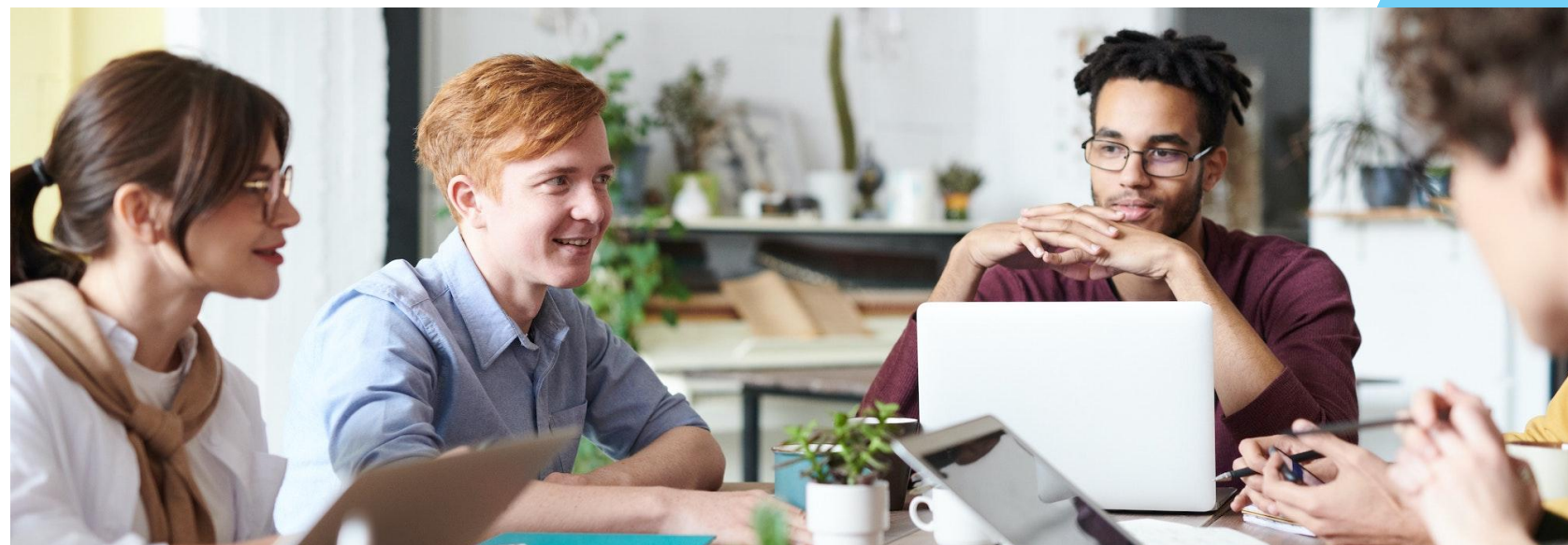


Additionally, we collaborate with a wide array of business partners both locally and internationally.



# Let's Connect :

We are passionate about partnering with like-minded leaders. Get in touch—we are excited to collaborate.



## ***Our Code of Conduct:***

### **1. Strive for Excellence:**

Always go the extra mile, exceed expectations, and act with empathy.

### **2. Professionalism:**

Commit fully, maintain integrity, and be accountable, reliable, and punctual.

### **3. Create Real Value:**

Understand client needs, deliver strategic solutions, and innovate with a long-term perspective.

### **4. Cross-Border Collaboration:**

Foster respectful teamwork across cultures to achieve shared goals.

### **5. Continuous Improvement:**

Embrace lifelong learning, grow from experiences, and stay humble.



# Contact us at:

Tel: +81 (0)3-6455-4022

Online Form: <https://www.onedrops.com/#contact>



We look forward to working with you.





*Tactics Beyond Limits*